

PosiTector[®] SST Soluble Salt Tester



Measures the concentration of soluble salts on metal surfaces



Innovative PosiPatch™...

- No adhesive residue
- Automatic air removal
- No sharps, no needles!

For use with
all Bresle patch
types including
PosiPatch

DeFelsko[®]
The Measure of Quality



Available on the
App Store



PosiTector® SST Soluble Salt Tester

All Gages Feature...

Simple

- Conductivity probe specifically designed for ISO 8502-6,9
- Displays test duration, sample temperature, conductivity ($\mu\text{S}/\text{cm}$) and surface density (mg/m^2 or $\mu\text{g}/\text{cm}^2$)
- On-screen interface guides users through the Bresle test method
- Automatic storage of a background (blank) measurement—handy when performing multiple tests
- NEW** Larger 2.8" impact resistant color touchscreen with redesigned keypad for quick menu navigation
- NEW** On-gage help explains menu items at the touch of a button

Durable

- NEW** Weatherproof, dustproof, and water-resistant—IP65-rated enclosure
- NEW** Ergonomic design with durable rubberized grip
- Two year warranty on gage body AND probe

Accurate

- Long Form Certificate of Calibration showing traceability to NIST included
- Includes certified conductivity standard (calibration solution) to verify probe accuracy. Certificate included.
- Automatic temperature normalization and sample temperature reporting
- Conforms to national and international standards including ISO, NACE, SSPC, IMO, and US Navy

Versatile

- PosiTector body accepts all PosiTector SST, 6000, 200, DPM, IRT, RTR, SPG, SHD, BHI, and UTG probes easily converting from a soluble salt tester to a coating thickness gage, dew point meter, surface profile gage, hardness tester, or ultrasonic wall thickness gage
- Ideal for determination of water-soluble contaminants in non-metallic blast media
- A selection of kits include everything needed to retrieve and analyze the concentration of soluble salts on surfaces
- Adjustable for various patch volumes
- Selectable display languages
- NEW** Auto rotating display with Flip Lock

Powerful

- Track and record test duration in accordance with ISO 8502-6
- NEW** Screen Capture—save 100 screen images for record keeping and review
- NEW** Up to 30% longer battery life
- USB port for fast, simple connection to a PC and to supply continuous power. USB cable included.
- PosiSoft USB Drive—stored readings and graphs can be accessed using universal PC/Mac web browsers or file explorers. No software required.
- Includes PosiSoft suite of software for viewing and reporting data

Select Standard or Advanced Features

Standard Models

Includes ALL features as shown above plus...

- NEW** Storage of 1,000 readings per probe—stored readings can be viewed or downloaded

Advanced Models

Includes ALL features as shown above plus...

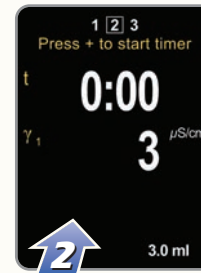
- NEW** Storage of 250,000 readings from multiple probes in up to 1,000 batches and sub-batches
- NEW** Touchscreen keyboard for quickly renaming batches, adding notes, and more
- WiFi technology wirelessly synchronizes with PosiSoft.net and downloads software updates
- Bluetooth® 4.0 Technology** for data transfer to a mobile device running the PosiTector App or optional portable printer. **BLE API** available for integration into third-party software.



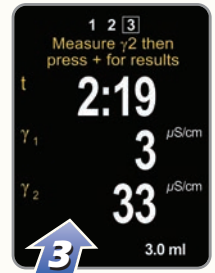
Easy 1-2-3 Bresle Test



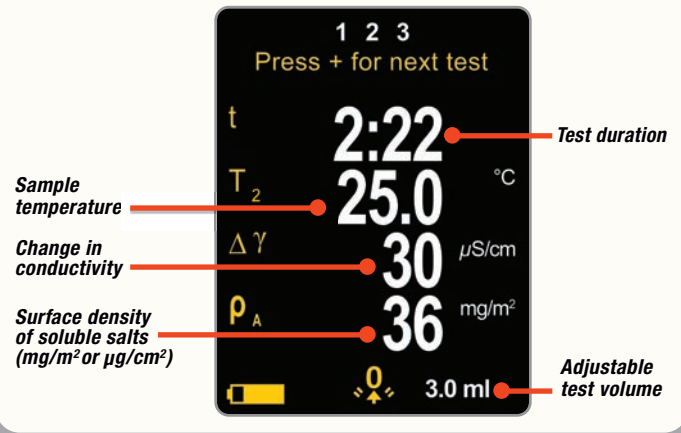
Reference...
Fill the syringe with DI water. Take background reading.



Sample...
Inject water into patch. Start timer.



Record...
Withdraw, inject into PosiTector SST.



PosiSoft®

FREE SOLUTIONS
for viewing,
analyzing, and
reporting data:



US812 Bridge Approach

ABC COMPANY

Salt Test US812-SB

Created: 2020-01-03 15:56:49
PosiTector Body S/N: 884293
Probe Type: PosiTector SST
Probe S/N: 285817

Summary

	#	x	σ	↓	↑
Conductivity $\Delta\gamma$ ($\mu\text{S}/\text{cm}$)	13	31.8	3.1	24	35
Surface Density ρ_A (mg/m^2)	13	38.3	3.8	29	42

Readings

#	γ_1 ($\mu\text{S}/\text{cm}$)	γ_2 ($\mu\text{S}/\text{cm}$)	$\Delta\gamma$	ρ_A (mg/m^2)	Duration	T_1 ($^{\circ}\text{C}$)	T_2 ($^{\circ}\text{C}$)	Volume (ml)	Date	Time
1	2	26	24	29	2:20	26.4	26.4	3.0	2016-09-15	16:03:30
2	0	34	34	41	2:17	26.6	26.8	3.0		16:06:48
3	0	35	35	42	2:13	26.8	26.3	3.0		16:09:16
4	1	36	35	42	2:10	26.3	25.7	3.0		16:11:48
5	5	34	29	35	2:08	25.6	25.3	3.0		16:14:52
6	0	33	33	40	2:12	25.3	25.4	3.0		16:17:42
7	3	32	29	35	2:14	25.6	25.8	3.0		16:20:40
8	3	33	30	36	2:15	25.6	26.3	3.0		16:23:24
9	0	34	34	41	2:13	26.3	26.6	3.0		16:26:03
10	1	34	33	40	2:13	26.7	27.6	3.0		16:28:35
11	1	34	33	40	2:18	26.7	27.9	3.0		16:31:10
12	1	34	33	40	2:30	26.7	27.8	3.0		16:34:05
13	1	32	31	37	2:10	26.7	27.3	3.0		16:36:47

2

PosiTector[®] SST Bresle Method Patch Options



PosiPatch

Reusable patch with Standard or Flexible magnetic ring

- For measuring salt contamination in accordance with ISO 8502-6,9
- Magnetic ring attaches PosiPatch to steel with no residue to clean
- Standard magnetic ring for flat surfaces and diameters >1 m (40 in.)
- Flexible magnetic ring for ID/OD diameters >10 cm (4 in.)†
- Automatic air removal through a watertight, air permeable membrane
- No sharps, no needles! Safe, flexible dispensing tip mates with PosiPatch
- Comparable price to latex patches
- Reusable patent-pending PosiPatch saves time and money
- Easy-to-use in any orientation

Specifications

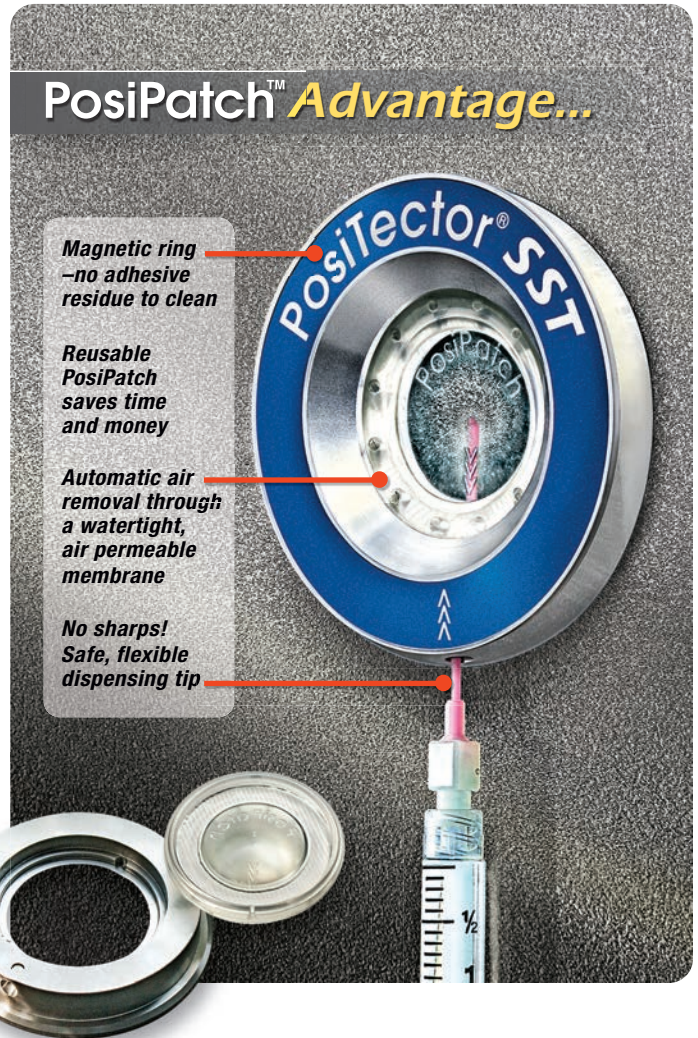
Test Area*	1,250 mm ²
Test Volume	2.5 – 3 ml
Patch Diameter	44.4 mm (1.75 in.)
Magnetic Ring Diameter	66.9 mm (2.6 in.)
Background Contamination*	< 3 mg/m ²

† Flexible Magnetic Ring minimum ID is 12 cm (4.5 in.)

* Certificate included

Innovative...

PosiPatch attaches to steel surfaces using a unique magnetic ring



DeFelsko Patch

Self-adhesive, polyurethane patches

- For measuring salt contamination in accordance with ISO 8502-6,9
- Low-tack adhesive for easy patch removal with no residue to clean
- Works on nearly any material or surface geometry
- Latex-free
- Lower cost than latex patch
- Easy-to-use in any orientation



Specifications

Test Area*	1,250 mm ²
Test Volume	2 – 3 ml
Dimensions	50 mm x 50 mm (1.97 in. x 1.97 in)
Background Contamination*	< 5 mg/m ²

* Certificate included

Latex Patch

ISO 8502-6 conforming latex patch with easy-peel tab and low-tack adhesive for easy removal



Specifications

Test Area*	1,250 mm ²
Test Volume	2 – 15 ml
Dimensions	52 mm x 52 mm (2.05 in. x 2.05 in)
Background Contamination*	< 5 mg/m ²

* Certificate included

Ordering Guide	Gage/Probe Only	PosiPatch Kit	DeFelsko Adhesive Patch Kit	Latex Adhesive Patch Kit
Probe Only ¹	PRBSST	SSTKITP	SSTKITD	SSTKITL
Standard Body + Probe ²	SST1	SSTKITP1	SSTKITD1	SSTKITL1
Advanced Body + Probe ²	SST3	SSTKITP3	SSTKITD3	SSTKITL3
Inclusions	<ul style="list-style-type: none"> Nylon carrying case with shoulder strap (SST1 and SST3 only) 	<ul style="list-style-type: none"> PosiPatch (5) Standard Magnetic Ring* Syringe and Plastic Tip(2) 250 ml DI Water Cup (5) Hard-shell Carrying Case 	<ul style="list-style-type: none"> DeFelsko Adhesive Patch (25) Syringe and Needle (2) 250 ml DI Water Cup (5) Hard-shell Carrying Case 	<ul style="list-style-type: none"> Latex Adhesive Patch (25) Syringe and Needle (2) 250 ml DI Water Cup (5) Hard-shell Carrying Case
	<p>1. PosiTector SST Probe Only models come complete with: certified conductivity standard, foam swabs (5), Long Form Certificate of Calibration traceable to NIST, instructions, PosiSoft Software, two (2) year warranty.</p> <p>2. PosiTector SST Standard/Advanced Body + Probe models come complete with: protective rubber holster, certified conductivity standard, foam swabs (5), Long Form Certificate of Calibration traceable to NIST, wrist strap, 3 AAA alkaline batteries, instructions, protective lens shield, USB cable, PosiSoft Software, two (2) year warranty.</p>			

* Substitute the Flexible Magnetic Ring for smaller ID/OD diameters by adding 'F' to the product code (i.e. SSTKITPF, SSTKITPF1, SSTKITPF3).

PosiTector SSTKITP1 shown



PosiTector SST Specifications

Range	0 – 1500 $\mu\text{S}/\text{cm}$, 0 – 6000 mg/m^2 , 0.0 – 600.0 $\mu\text{g}/\text{cm}^2$
Resolution ¹	1 $\mu\text{S}/\text{cm}$, 1 mg/m^2 , 0.1 $\mu\text{g}/\text{cm}^2$
Accuracy	$\pm 2 \mu\text{S}/\text{cm}$ (0 – 200 $\mu\text{S}/\text{cm}$) $\pm 10 \mu\text{S}/\text{cm}$ (>200 – 600 $\mu\text{S}/\text{cm}$) $\pm 20 \mu\text{S}/\text{cm}$ (>600 – 1500 $\mu\text{S}/\text{cm}$)
Temperature Range	0 – 50° C (32 – 122° F)
Normalization Temperature	25° C (77° F)
Test Cell Volume	1 ml

1. Hi Res Mode increases resolution to 0.1 $\mu\text{S}/\text{cm}$ (0 – 200 $\mu\text{S}/\text{cm}$)

*Size: 127 x 66 x 25.4 mm (5" x 2.6" x 1") *Weight: 137 g (4.9 oz.) without batteries

*Size and weight are for the PosiTector gage body only and do not include the probe.

PosiPatch Starter Kit (SSTKITPATCHP/SSTKITPATCHPF)

For use with existing conductivity meters. Try the revolutionary, reusable PosiPatch with a Standard or Flexible Magnetic Ring. Includes: PosiPatch (5), syringe (2), dispensing tip (2), and choice of standard or flexible magnetic ring.

Abrasives Test Kit (SSTABRKIT)

Measure the concentration of soluble salts in blast cleaning abrasives in accordance with ASTM D4940 and ISO 11127-6. Includes: 600 ml glass beaker, 100 ml glass beaker, plastic funnel, 600 ml plastic mixing beaker, 60 ml (2 oz.) Certified Conductivity Standard, 1 liter deionized water (type II), 100 circle filters (125 mm), stainless steel mixing rod, instruction card, hard shell case, and certificate of analysis

Replacement Patches

PosiPatch (5 pack)	SSTPATCHP5
PosiPatch (24 pack)	SSTPATCHP24
Standard Magnetic Ring for PosiPatch	SSTRING
Flexible Magnetic Ring for PosiPatch	SSTRINGF
DeFelsko Adhesive Patch + Needle (25 pack)	SSTPATCHD25
Latex Adhesive Patch + Needle (25 pack)	SSTPATCHL25

Consumables

Plastic Dispensing Tips (10 pack) — for use with the PosiPatch

Needles (10 pack) — for use with adhesive patches

3 ml syringes (10 pack) — for use with dispensing tips and/or needles

30 ml Cups (10 pack) — sterile, single-use cups ensure measurement accuracy

Certified Conductivity Standard (60 ml, 2 oz.) — to verify probe accuracy

Deionized Water (250 ml [8 oz.] or 1L [33.8 oz.]) — purified, ion-free water

Foam Swabs (5 pack) — for cleaning the probe's test cell

Circle Filters (100 pack) — 125 mm for use with Abrasives Test Kit

Conforms to ISO 8502-6/8502-9, US Navy NSI 009-32, US Navy PPI 63101-000, AS 3894.6, IMO MSC.215(82), IMO MSC.244(83), SSPC Guide 15, ISO 11127-6, ASTM D4940

©DeFelsko Corporation USA 2021. All Rights Reserved. Technical Data subject to change without notice. • Printed in USA • SST.v.LW/W2101

DeFelsko[®]
Inspection Instruments

DeFelsko Corporation • 800 Proctor Ave. • Ogdensburg, New York 13669-2205 USA
Toll Free 1-800-448-3835 • Tel: +1-315-393-4450
techsale@defelsko.com • www.defelsko.com


Made in U.S.A.

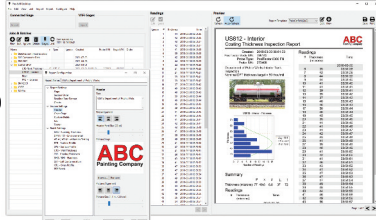
PosiSoft® Suite of Software

Powerful ways to view and report your PosiTector and PosiTest data

PosiSoft Desktop — PC/Mac

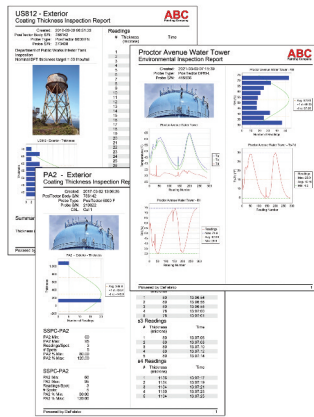
Powerful desktop software for downloading, archiving, and reporting measurement data.

- Import readings directly from the gage via USB, WiFi, or legacy PosiSoft Desktop versions
- **Jobs feature** consolidates batches into groups to keep measurement data organized and to quickly create multi-batch reports
- Fully integrates with PosiSoft.net—backup and synchronize jobs, batches, readings, and report templates to the cloud (see inset at right)
- Export readings as .csv (comma separated value) files for easy import into Excel and other spreadsheets



Professional, Custom Reports

- Compile single or multi-batch reports from multiple probes and instrument types
- Add pictures, screen captures, notes, and more with an onscreen live preview
- Instantly create professional reports from pre-formatted report templates
- Design custom layouts and templates—add custom cover pages and logos, and choose to display charts, histograms, and/or individual readings
- Drag-and-drop Custom Fields mode—import PDF forms and overlay fields to automatically populate inspection data

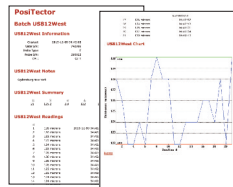


Prompted Batch Mode

Create pre-defined batches with onscreen text and image prompts for each reading and upload to PosiTector 6000, 200, and UTG gages (*Advanced models only*).

- Ideal for ensuring a consistent measurement pattern for repetitive jobs or when specific measurement locations are required

PosiSoft USB Drive — Gage based



A simple gage interface to retrieve data in a manner similar to USB flash drives or cameras. No software to install or internet connection required. Measurement data can be printed quickly from a formatted HTML report or exported in .csv format for further analysis in spreadsheets.

PosiTector App — iOS/Android

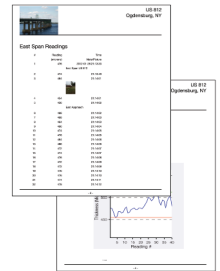
Fully-featured mobile app that connects to the PosiTector SmartLink, PosiTector Advanced gages, and the PosiTest AT-A.

- Auto pairing Bluetooth BLE connection
- Add images and notes to individual readings or batches directly from your device
- Email readings as .csv (comma separated value) files for easy import to Excel and other spreadsheets.
- Synchronize readings with PosiSoft.net—backup and synchronize jobs, batches, and readings to the cloud (see inset below)



Mobile Reporting Solution

- Compile single or multi-batch reports from multiple probes and instrument types
- Add pictures, screen captures, notes, and more
- Email pre-formatted or custom reports from your device instantly



PosiSoft.net

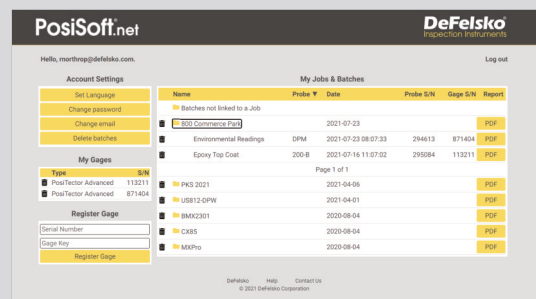
Secure storage of measurement data in the cloud.

compatible with PosiSoft Desktop and PosiTector App

- Upload measurement data directly from WiFi-connected PosiTector Advanced gages from anywhere in the world—no software required
- Synchronize and share measurement data across multiple computers

Ideal for...

- Users with multiple computers, instruments, and office locations
- Inspection companies managing data from multiple inspectors
- Login from PosiSoft Desktop to synchronize all measurement data and stored report templates from your account



PosiSoft.net Web Viewer Review measurement data and print simple, pre-formatted PDF reports from any web browser—no software installation required.

PosiTector Developer Resources

- Bluetooth 4.0
- WiFi
- Keyboard Mode
- USB Serial

PosiTector and PosiTest AT-A instruments can integrate with third-party software, drones, ROVs, PLCs, and robotic devices using several industry-standard communication protocols including: Bluetooth 4.0, WiFi, Keyboard mode, and USB serial.

